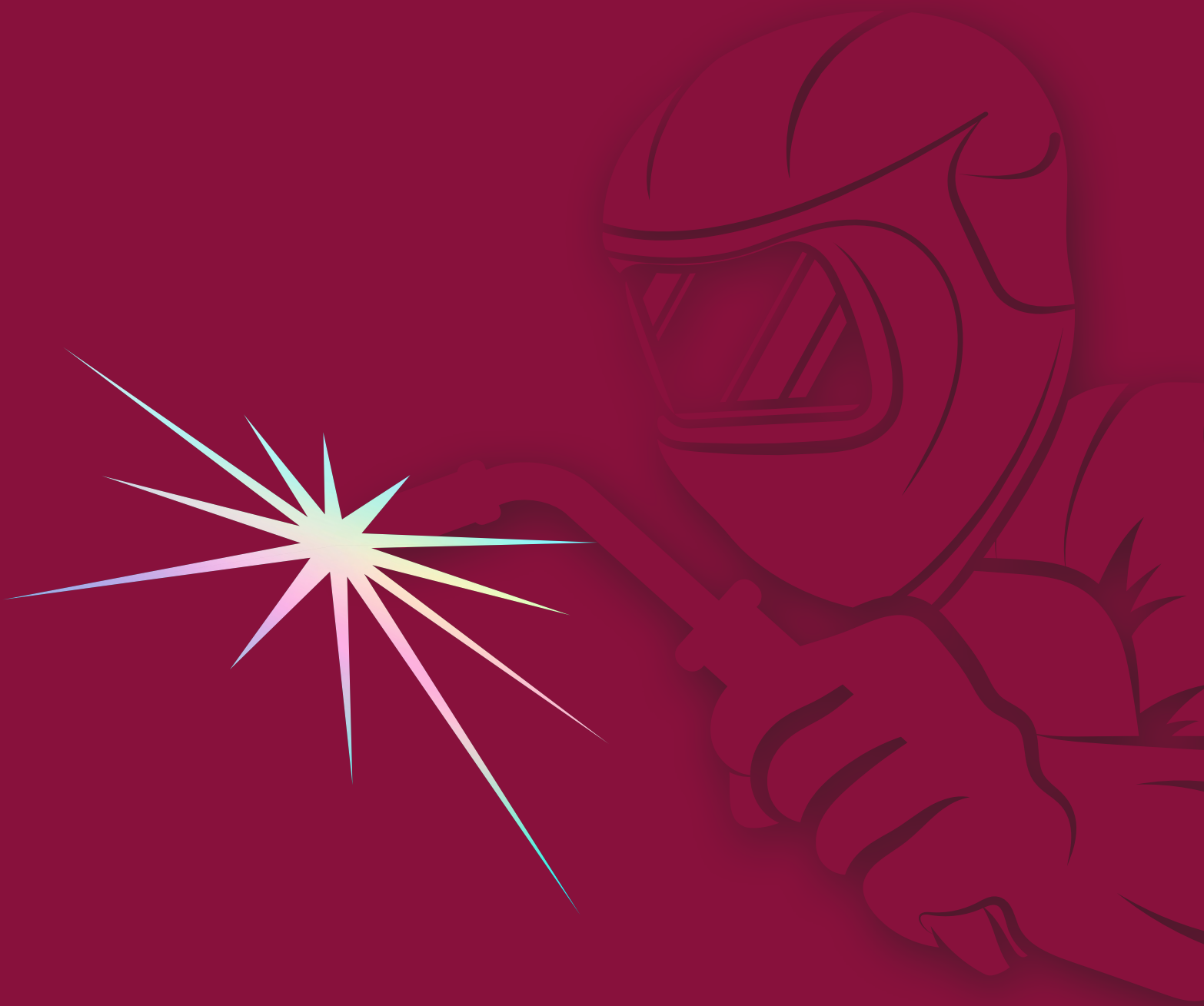


CORPORATE BROCHURE



Dear Valued Relation,

It is with great pleasure we re-introduce ourselves to the welding industry. After over 40 years growth and innovation, it's time to evaluate and renew our message.

We value our customers who are the most important asset to us. Their customer satisfaction and continuous welding operations is our number one priority.

As a family business, we ensure all our efforts are in the interest of our customers and we are fully committed to our efforts, as we do not need to serve external stakeholders. We take pride in our main objective - customer service, which is our way to success. Every day we act on this practice, it is the core of our business culture and we treat it as we do our family.

Initially founded as a manufacturer and supplier for the shipbuilding industry in Korea, we have developed our portfolio and now we serve every industry. Our teams in production, R&D and quality have made continuous improvements and innovations to develop products to support almost every welding application. Our international sales organization has developed into a key player in the global welding industry and is now present in all continents.

Today, we have over 1,700 employees across multicultures to support our customers' needs around the world. A team which I'm proud of, as each and every one of them is a part of the heart and soul of HYUNDAI WELDING.

The team is evolving for the next growth phase, as we continue to extend our business geography and to serve the expanding markets and needs of our customers. We are ready for the transformation, and to be amongst the industry leaders we will keep you, our valued customer, as our main priority in every step we take.

Warm regards,

Mong Suk Chung

Mong Suk Chung
Chairman
HYUNDAI WELDING Co., Ltd.

SAVE THE DATE: 11-15 September 2023

Meet us at Schweißen und Schneiden 2023 in Essen Germany
Hall 6, Booths 6F28 & 6G30



Gangnam-gu, Seoul, South Korea
Location of HYUNDAI WELDING HQ

‘HYUNDAI’ MEANS **MODERN** AND WE LIVE UP TO ITS MEANING

Since its inception in 1975, HYUNDAI WELDING has been an essential supplier to the leading Korean manufacturers in the Hyundai conglomerate to develop and drive the global welding industry.

HYUNDAI WELDING is a privately owned entity working closely with some of the most prominent manufacturers in Korea, including companies within the Hyundai conglomerate. We have made continuous improvements in our products to deliver welding solutions to customers in a multitude of industries. Our combined efforts and breakthroughs in technology have allowed HYUNDAI WELDING to become a leading innovator in the welding industry today. We are fully committed to understanding the needs and challenges of our customers. This then allows us to continually improve and innovate our products to provide exceptional world class welding solutions.



STEEL

Source: Rank and revenue in 2021



Major steelmaker in Korea

Ranked 16th in global steel production (19.81Mt)
Revenue of 18 billion USD per year

SHIPBUILDING



World's largest shipbuilding company

Hyundai Heavy Industries Shipbuilding Group
19 drydocks, 11 million square meters in area, 11 million DWT in capacity
Revenue of 11.9 billion USD per year

AUTOMOTIVE



Leading global car manufacturer

Ranked 3rd in global auto sales (Hyundai-Kia Automotive Group)
With state of the art manufacturing facilities in USA and Europe
Revenue of 95 billion USD per year



CONSTRUCTION



Leading construction company in Korea

Ranked 16th globally in international contractors
Revenue of 15 billion USD per year

A GLOBAL PARTNER FOR WELDING SOLUTIONS

HYUNDAI WELDING is a world leader providing technical and innovative welding solutions. With headquarters based in Seoul, Korea, we offer a wide range of advanced welding consumables, equipment and robotic solutions to solve the many needs of our global partners in the welding industry. As the leading manufacturer of welding consumables and equipments in Korea, and with a global network of sales, distribution and manufacturing plants, HYUNDAI WELDING has developed into a key player in the international welding industry.

The business was founded in 1975 in Korea as Seohan Development Co., Ltd. Over the following years, manufacturing facilities were opened to support the ever-growing demand of our welding products. In 1987 the business name changed to HYUNDAI WELDING Co., Ltd. and today the business continues to evolve and provide welding expertise to support the global market.



FOUNDED IN **1975**
HEADQUARTERS
SEOUL, SOUTH KOREA



BUSINESS IN MORE THAN
100 COUNTRIES



5 PRODUCTION
FACILITIES



EMPLOYEES
> 1,700

VALUING EMPLOYEES AND RESPECTING THE COMMUNITIES



The HYUNDAI WELDING business continuously evolves through the commitment of our employees implementing Best Management Performance and Value Creation.

HYUNDAI WELDING is fully committed to creating a foundation for all employees to align with the business values. We provide everyone with opportunities to develop and take a thoughtful and strategic approach to workplace inclusion, whilst keeping to our strong and superior corporate culture.

Our people are core to our success and we value ideas, reward initiatives and encourage involvement which all contribute to the development and progress of the company and provide the highest level of expertise within our business.

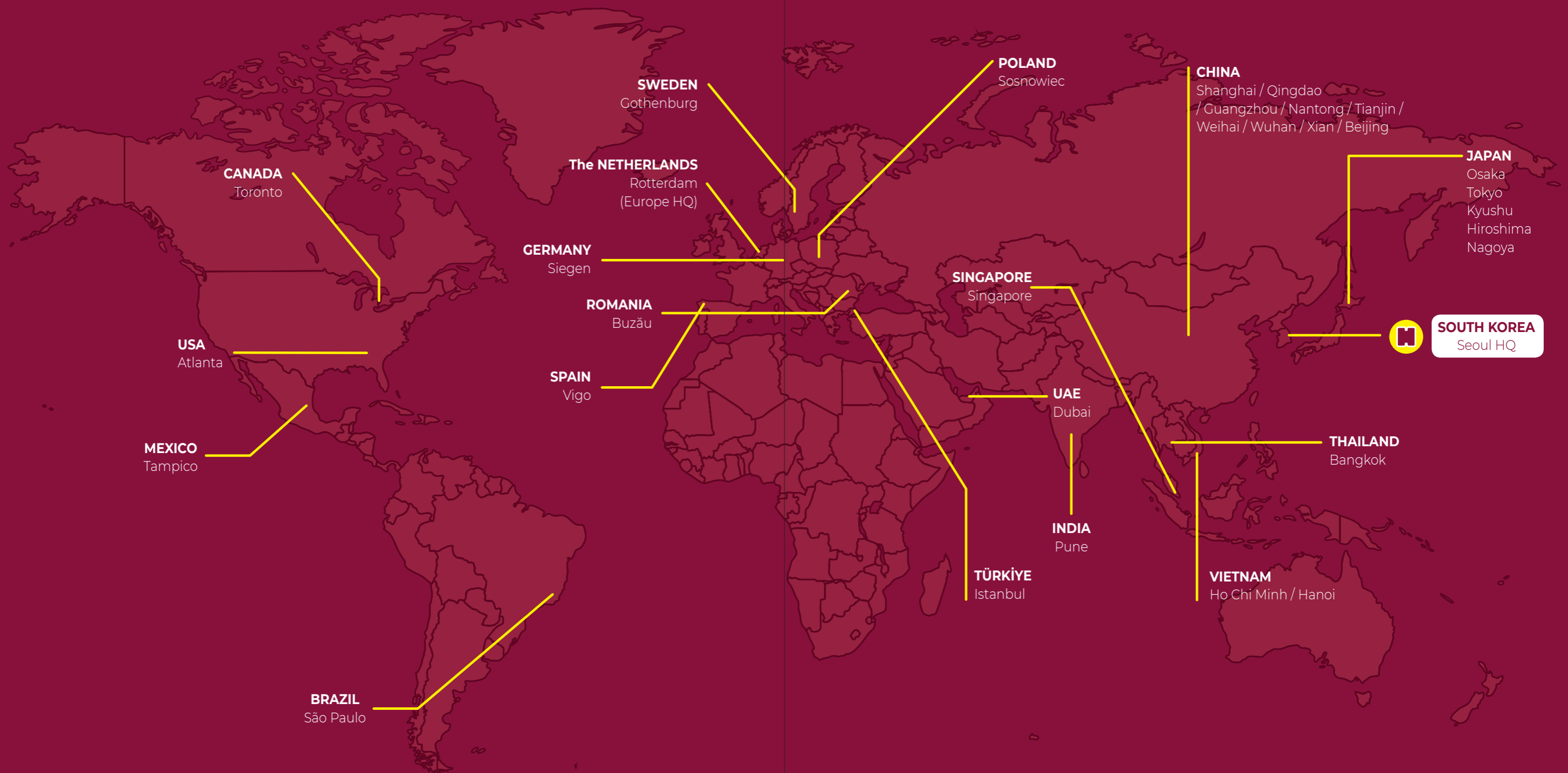


HYUNDAI WELDING is entrenched in its core values of: **Accountability, Honesty, and Respect.**

All employees at HYUNDAI WELDING – Over 1,700 people, across multicultures, around the world – work together with each other and our customers, with these core values in mind.

Together our energetic and diverse organization employees act with integrity. Our inspirational workplaces allow open communication to improve employee loyalty, productivity and achieve their goals.

Our management system ensures employees are able to achieve their full potential and the opportunity to acquire the skills, knowledge and experience to uphold our core values.



A WORLDWIDE NETWORK & SERVICE

To serve the worldwide demands of welding products we continue to grow with our local and global network of “end-to-end” sales and service outlets across six continents. This global presence allows us to provide customers with the best level of local support and know-how.

 **Headquarters**  **Sales Offices**

For decades, HYUNDAI WELDING have been supporting the demands of many industries with advanced welding solutions. Operating sales networks in over 100 countries, allows us to remain close to our customers as we continuously look to expand into other territories. HYUNDAI WELDING understands customer needs and offer them world class products and global solutions all backed with superior customer service.



Pohang Plant 1



Pohang Main Plant (Pohang, South Korea)

- FCAW / SAW / GMAW Production
- R&D Center

Pohang Plant 2



Pohang 2nd Plant (Pohang, South Korea)

- SMAW / GMAW Production
- Welding Equipment Production

Gochang Plant



Gochang Plant (Gochang, South Korea)

- FCAW Production

China Plant



China Plant (Kunshan, China)

- FCAW / SAW / GMAW / SMAW Production
- R&D Center

Vietnam Plant



Vietnam Plant (Ho Chi Minh, Vietnam)

- FCAW / SAW / GMAW Production

EXCELLENCE IN MANUFACTURING

HYUNDAI WELDING - A global manufacturer of welding consumables and equipment

HYUNDAI WELDING has 5 production facilities servicing the global demand of welding products which are led by strong, multi-cultural teams with a strong Korean business etiquette. Our talented manufacturing teams offer unique individual skill-sets which help with our company growth.

We are dedicated to assist our partners increase their productivity and lower their costs by providing sustainable manufacturing solutions.

Moving forward, HYUNDAI WELDING is looking to increase its manufacturing plants internationally to serve in its expanding markets and meet its customer needs. We take pride in our heritage and world class manufacturing operations which together help drive the welding industry forward.

1975

1975. 09
Establishment of
Seo Han Corporation

1980

1980. 12
Started Submerged
Wire and Flux Production

2002

2002. 04
Establishment of Plant
in China

2009

2009. 05
Establishment of Plant in
Gochang

1977

1977. 01
Establishment of Welding Consumables
Factory in Pohang, South Korea

1987

1987. 01
Changed company name
to HYUNDAI WELDING

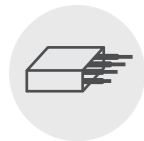
2007

2007. 09
Establishment of Plant
in Vietnam

2011

2011. 08
Establishment of
Pohang Plant 2

Stick Electrodes



SMAW Electrodes (also known as Shielded Metal Arc Welding or Manual Metal Arc Welding) is a versatile, commonly used process where the arc is struck between an electrode and the workpiece. Both the electrode and the surface of the work piece melt to create a weld. Electrodes are wires with flux coated covering. Electrodes have various coating compositions which give the electrodes a distinctive set of characteristics.

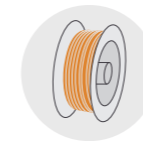
There are several factors to consider before choosing the correct product for any project. In our Pohang (South Korea) and Kunshan (China) plants, HYUNDAI WELDING's mission is to produce a selection of highest quality stick electrodes with a wide variety of coatings to maximise weld quality, provide correct weld strength, ensure easy slag removal, improved deposition rates, better bead quality and reduced spatter.

Stick Electrode Product Range

- Rutile
- Basic
- Cellulosic
- Low Alloyed Steel
- Stainless Steel
- Nickel Base
- Cast Iron



GMAW / GTAW



MIG Welding (also known as Gas Metal Arc Welding or GMAW) is currently the most commonly used welding process that provides particularly high welding speeds that can be used manually, mechanically, or robotically. MIG wire is a solid wire which feeds into the welding pool from a welding torch.



In contrary, TIG Welding (Gas Tungsten Arc Welding or GTAW) is a highly manual, precise, and versatile arc welding method which works better with thinner base materials and used as a process when a superior weld quality is needed.

The wire drawing process is hugely important in the production of welding wire to ensure quality welds. Our production facilities in Pohang (South Korea), Kunshan (China) and Ho Chi Minh (Vietnam) manufactures wires to the highest quality standards to ensure optimum quality when welding with our MIG and TIG wires, therefore leading to less welding defects and less post-weld cleaning.

GMAW / GTAW Product Range

- Mild Steel
- Low Alloyed Steel
- Stainless Steel
- Aluminium Alloy
- Copper Alloy
- Nickel Base



FCAW



FCAW (also known as Flux Cored Arc Welding or FCW) has evolved from the GMAW (Gas Metal Arc Welding or solid wire) welding process to improve metal transfer, weld metal properties, and weld appearance. Like GMAW, FCAW can be used manually, mechanically and also in a fully automated manner. The main advantages of Flux Cored Wires are improved usability, superb weldability and higher deposition rates. Although higher upfront cost than solid wires, Flux Cored Wires could help you gain better savings through productivity and minimizing post-weld work such as repair and cleaning.

As a specialized manufacturer of Flux Cored Wires, HYUNDAI WELDING manufactures a full product portfolio from Pohang (South Korea), Kunshan (China) and Ho Chi Min (Vietnam) facilities, all produced to the highest quality for premium performance.

FCAW Product Range by Alloy Type

- Mild Steel
- Low Alloyed Steel
- Stainless Steel
- Nickel Base

FCAW Product Range by Flux & Seam Type

- Rutile
- Basic
- Metal-Cored
- Self-shielded
- Gas-shielded
- Seamless



Subarc Wires and Fluxes



SAW (also known as Submerged Arc Welding) is generally used when looking for increased production, higher welding speeds and greater deposition rates in an automatic or mechanized mode. It involves the formation of an arc between a continuously fed electrode and the workpiece and a blanket of powered flux to generate a protective gas shield. It is most commonly used for heavy duty structural welding.



Achieving the appropriate mechanical and chemical properties in SAW depends on both the wire and the flux. HYUNDAI WELDING offers a wide range of wire and flux combinations which improve productivity and high weld integrity. There are various packaging options available depending on the customer productivity. SAW flux from Pohang (South Korea), Kunshan (China) and Ho Chi Minh (Vietnam) facilities are developed and manufactured to ensure improved protection in welding processes and to generate desired bead shapes.

SAW Wire and Flux Combination Range by Alloy Type

- Mild Steel
- Low Alloyed Steel
- Stainless Steel
- Nickel Base
- Cladding Strips for Nickel Base and Stainless Steel



Hardfacing & Other Consumables



Hardfacing means welding surface layers of welding material on the base material on a worn or new component surface that is prone to wear and abrasion. Depending on the surface that needs welding, it is necessary to identify the appropriate hardfacing consumable (SMAW / FCAW / SAW) to achieve optimal wear protection and extend the life of the part.

From Pohang (South Korea), Kunshan (China) and Ho Chi Minh (Vietnam) facilities, HYUNDAI WELDING is manufacturing a wide range of hardfacing consumables for restoring worn parts and has developed products to protect against abrasion, erosion, corrosion, impact and extend the service life of the industrial component.

Hardfacing Product Range by Wear and Abrasion Type:

- Rebuilding
- Severe Impact
- Metal-Metal Wear
- Metal-Earth Wear
- Severe Abrasion

In addition to hardfacing products, HYUNDAI WELDING also provides a range of other welding consumables including gouging electrodes, tungsten electrodes and ceramic backing materials.



Equipment



To maximize results when welding or joining, it is necessary to choose the right welding machine capable of carrying out the welding task on hand. HYUNDAI WELDING offers a comprehensive range of welding equipment for MMA/Stick, MIG/MAG, TIG and SAW as well as plasma cutting. The equipment complement our extensive range of quality welding consumables and ensure you have the perfect partnered welding solution.

Our welding equipment, whichever machine you choose, can tackle the many demands and complex jobs at hand. Whether a small welding job or a heavy-duty welding application our equipment is packed with many great features for welding professionals. Whether you need to boost efficiency, improve quality or make the welders work easier, HYUNDAI WELDING has the answer.

Equipment Product Range

- Conventional MIG/MAG Welders
- Inverter MIG/MAG Welders
- TIG Welders
- MMA/SMAW Equipment
- SAW Equipment and Carriages
- Plasma Cutting Equipment
- Wire Feeders and Torches
- Welding Accessories



Equipment R&D, Pohang Plant 2, South Korea

ROBOT WELDING SOLUTIONS FOR **TOTAL FLEXIBILITY** IN WELDING



In today's industrial manufacturing environment, robotic welding is increasing as manual welding relies heavily on the level of welder skills as well as their concentration to achieve consistency and repeatable good welds. Nowadays, we see a lack of skilled welders to operate all welding demands. Robot welding can be used in any industry that would benefit from automation to perform exceptionally high quality, reliable, flexible, efficient welds and importantly consistency.

Investment in automation is a proven concept but with many benefits including substantial increases in productivity and flexibility. In addition, a robot can handle those complex, demanding jobs plus difficult and/or repetitive tasks which ease welding operations.

HYUNDAI WELDING offers integrated robot welding solutions with simplified programming. The robot's arm can simply be moved to the start of the weld, and detect any collision. These robots may be installed on any worksite, and they offer a template where one can easily set their own preferred welding conditions, providing the flexibility required in everyday welding.





ADVANCED WELDING SOLUTIONS TO SERVE EVERY INDUSTRY



We understand the importance of welding technology and the need for innovative solutions to complex industrial challenges, whatever your industry.

Wherever you are, whatever your industry, HYUNDAI WELDING offers the perfect solution to partner with your specific welding requirements. Our superior quality products, whether welding consumables, equipment or robots, offer a combination of quality-tested innovative technology. Our history and proven track record highlight that HYUNDAI WELDING can be your trusted partner. We offer our expertise and commitment to supplying leading edge quality products throughout the field of steel fabrication.

HYUNDAI WELDING has been working with the world's top shipbuilding companies for decades. Our experts have provided efficient welding solutions to shipbuilders all over the world, through our specialization and expertise in shipbuilding and repair. In addition to being a key supplier in the offshore industry, with our history of supplying significant projects around the world, HYUNDAI WELDING is also known as a global brand in industries including construction, pipemill, pipeline and renewable energy.

Our cutting-edge welding solutions in automobile manufacturing have bonded our partnership with automotive and heavy equipment manufacturers all over the world with our efficient, durable, and profitable solutions for increasing their efficiency, productivity and competitiveness.



WIND		CS WIND 大金重工業 DAJIN HEAVY INDUSTRY	DK 동국S&C GRI Renewable Industries	HYUNDAI ENGINEERING & STEEL INDUSTRIES SK oceanplant	SPECO SëAH Steel
SHIPBUILDING		HD HYUNDAI HEAVY INDUSTRIES MEYER TURKU SHIPYARD 1737	HYUNDAI SAMHO HEAVY INDUSTRIES DAMEN	HYUNDAI MIPO DOCKYARD	
AUTOMOTIVE		HYUNDAI	KIA	TOYOTA	
STRUCTURAL		Kirby BUILDING SYSTEMS	ASF ARAB STEEL FABRICATION CO. S.A.E	HYUNDAI ENGINEERING & CONSTRUCTION	ZAMIL STEEL energys Steel Fabrication
MAINTENANCE & REPAIR		posco	HYUNDAI STEEL	HYUNDAI ENGINEERING & STEEL INDUSTRIES	SëAH Steel
HEAVY EQUIPMENT		HYUNDAI DOOSAN INFRACORE	L&T Construction Equipment	SIMEX HEAVY MADE EASY	menci group
LNG		HD HYUNDAI HEAVY INDUSTRIES HYUNDAI ENGINEERING & CONSTRUCTION	HYUNDAI SAMHO HEAVY INDUSTRIES SAMSUNG SAMSUNG C&T	HYUNDAI MIPO DOCKYARD	
PETROCHEMICAL		DOOSAN	KNM	NPCC	JUTASAMA

THE EMERGENCE OF GLOBAL CUSTOMERS FOR STANDARDIZED AND HIGH PERFORMING WELDING CONSUMABLES IN DIFFERENT MARKETS



Global customers are incredibly important for HYUNDAI WELDING, particularly in today's interconnected global economy.

HYUNDAI WELDING welding consumables are used by customers from all kinds of industries, all around the world, and interfaced to all welding applications. Our cooperation with our global customers is leveraging our global reach and global resources to have a world covering business model. Global customers provide our company with valuable feedback and insights into different industry and market needs, as well as their welding preferences. This drives innovation and helps our company to develop new products, solutions and services tailored to different markets.

Partnering with well-known global customers enhance our business credibility and reputation globally. HYUNDAI WELDING is well capable of delivering high-quality products and services that meet the standards of reputable global industrial companies. Working with global customers requires us to scale our operations and expand our capabilities to better serve the customer's needs all around the world.



WORLD-CLASS RESEARCH & DEVELOPMENT

HYUNDAI WELDING is committed to ensuring its products remain at the forefront of technology.



Our highly experienced team of engineers, metallurgists and technicians continually work side-by-side with end-users and industry partners, to research, invest and develop a wide range of welding consumables for a wealth of welding solutions.

HYUNDAI WELDING's dedication to advanced welding technologies, combined with our skilled engineers who work in state-of-the art facilities, deliver solutions for the most demanding and challenging welding environments. We take great pride, like our tradition, in being the innovators that continually refine and develop world class products that are helping to drive the industry forward.

We continue to introduce new welding materials to continuously drive product reliability with extensive support from recognized research institutes. With our expertise and know-how, we have developed welding materials that are high performing, eco-friendly, and highly efficient.

We strive to work closer with our customers, to understand their needs, listen to their expectations and deliver customer-tailored services.

Our research institute is committed to product development to allow HYUNDAI WELDING to make meaningful improvements that can effectively change the welding world and satisfy our customers, wherever they are.



ESTABLISHED TRUST WITH EXCELLENCE IN QUALITY



HYUNDAI WELDING is committed to quality standards and continuous product improvement.

Our advanced Research and Development facilities and their experts set HYUNDAI WELDING to the highest quality and standard levels. HYUNDAI WELDING's QA technicians are passionate specialists who drive our consistent service to the highest quality and standard levels.

INTERNATIONAL STANDARDS

All of our manufacturing is performed according to International Standards such as EN, AWS, ASME, JIS, etc. We have achieved approvals for most international societies, including: ABS, LR, DNV-GL, BV, NK, KR, CWB, TUV, DB, RINA, CRS, CCRS, RS, RRR, NAKS, UKRACEF, and FBTS.

ISO APPROVALS

Our company is currently ISO 9001 (since 1994), ISO 14001 (since 2004) and ISO/TS 16949 (since 2004) certified, and our internal quality assurance teams are hard at work bringing a higher level of service and quality.



SUSTAINABILITY IS PART OF HYUNDAI WELDING'S ONGOING JOURNEY



As UNESCO defines it, sustainability is often thought of as a long-term goal for a more sustainable world, while sustainable development refers to the many processes and pathways to achieve it.

Sustainability starts with each one of us. At HYUNDAI WELDING, sustainability is part of our ongoing journey leading our principle for our business processes in terms of environmental, economic and social impact for a better future.

In all processes for our sourcing and production, we take responsibility and strive to reduce environmental impact of our operations with lean and clean production as well as sustainable resources together with our suppliers.

All our efforts to improve the environment starts with the reduction of green-house emission, energy efficiency, reduction of air-pollution, waste management and manufacturing eco-friendly products.

The steps being taken by HYUNDAI WELDING are helping contribute to driving forward our sustainable world!



HYUNDAI WELDING is a world-class manufacturer that specializes in providing optimum welding solutions to its customers, by supplying top-notch welding consumables and equipment. HYUNDAI WELDING has contributed to the development and success of the global welding industry for almost 50 years since its foundation in 1975.

For more information on HYUNDAI WELDING, please visit www.hyundaiwelding.com



HYUNDAI WELDING CO., LTD. (HEAD OFFICE)

WeWork Bldg. 15-18th Fl. 507, Teheran-Ro, Gangnam-Gu, Seoul

Tel: (+82-2) 6230-6032~35, 51~68, 76~81 Fax: (+82-2) 522-2030, 525-7317

