

**PULSE WELDING**  
**Hi 500P**

A new concept premium welding machine using Wide - SAC technology



Pulse MIG
SPC
SAC
Synergic
W-SAC
MIG MAG

Package configuration
<ul style="list-style-type: none"> <li>Welding machine</li> <li>Wire feeder (wire cover type)</li> <li>Torch 5m (water-cooled)</li> <li>Input cable 5m</li> <li>Single cable 10m</li> <li>Gas hose 3m</li> <li>Earth cable 3m</li> <li>Water cooler</li> </ul>

Specification	
Rated Input power	400V, 3P, 50/60Hz (±15%)
Rated Output	500A, 42V (100%)
Communication	CAN, I/O Contact, Device Net
Welding Method	MAG, MIG, Pulse MIG
Weight	70kg
Dimension	380mm x 610mm x 850mm

Options
<ul style="list-style-type: none"> <li>Wire feeder (Wire cover type, square box type)</li> <li>Water cooler (other type)</li> <li>Regulator</li> </ul>

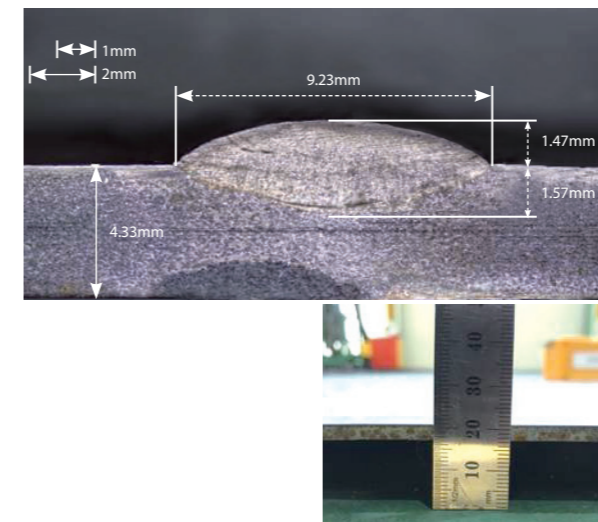
- Features**
- ▶ Integration with automation equipment and robot
  - ▶ Low heat input, low spatter welding SAC, SPC, Wider-SAC
  - ▶ Built-in Pulse synergic (Total 40 synergic, 30 pre-configured and 10 add-on)
  - ▶ Built-in pulse welding function for thin plates and shipbuilding (100% MAG welding)
  - ▶ Built-in pulsed submerged arc welding function for panel lines in shipbuilding (specialized low heat input)
  - ▶ Welding scrubber can substitute conventional TIG welding machines
  - ▶ Can choose between MIG wire feeder and regular wire feeder
  - ▶ Built-in Aluminum rear plate welding function (Ar 100%)

**PERFORMANCE**

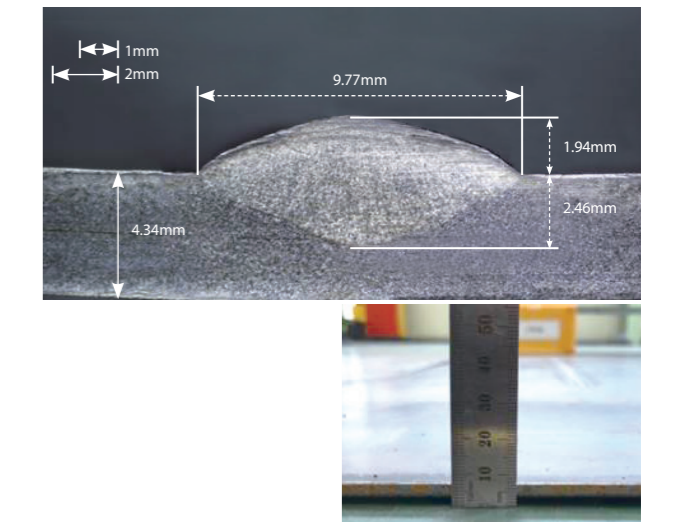
**Pulsed submerged arc welding**

- In comparison to DC submerged arc welding : Increases weld penetration by 35%, Decreases base metal deformation rate by 30%
- For welding thin plate panel lines in shipbuilding (below 6mmt)

[ DC, 260A/32V, 640mm/min, 4.3mmt, weld penetration : 1.57mm ]



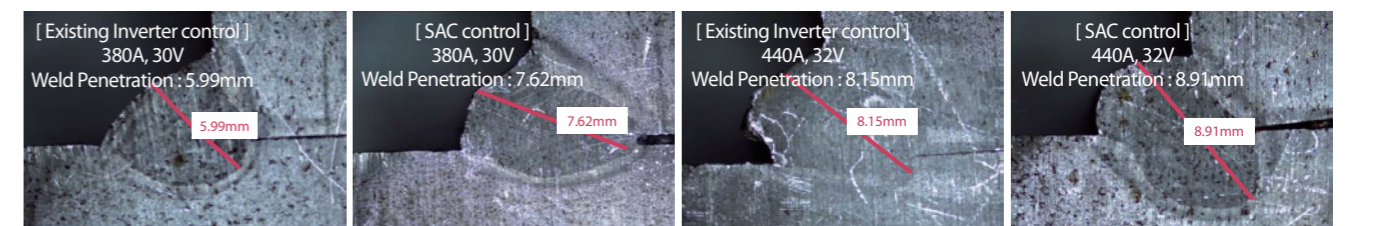
[ Pulse, 280A/27V, 640mm/min, 4.3mmt, weld penetration : 2.46mm ]



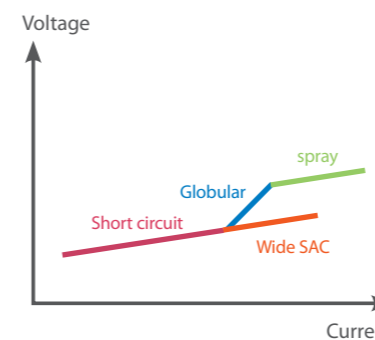
**Wide Surface Arc Control (Wide-SAC)**

- Forces short circuit control of flux cored/metal-cored wires in globular areas
- Low spatter, high weld penetration (Decreases spatter by 40%, Increases weld penetration by 20%) when compared to existing inverter welding machines

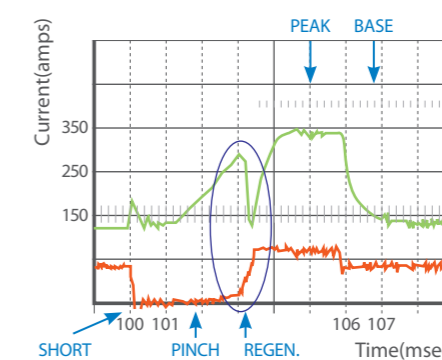
**Comparison of weld penetration**



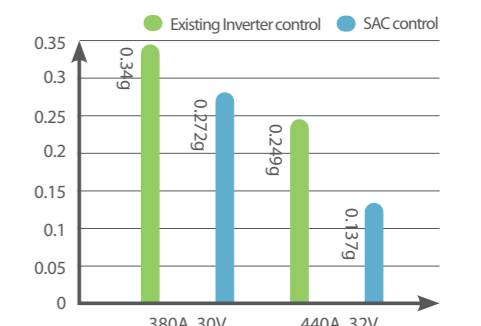
[ Metal-cored wire dia 1.6mm, 100% CO2, Welding speed : 1,000mm/min ]



[ Wide SAC : Wide surface arc control ]



[ SAC control concept ]



[ Comparison of spatter quantity ]